

# LPGS SERIES - TRUE Hybrid GEL Battery

## LPGS12-150(12V150AH)



### Specification

Nominal Voltage	12V
Nominal Capacity(10HR)	150.0AH
Dimensions	Length 483±3mm (19.0 inches)
	Width 170±2mm (6.69 inches)
	Container Height 238.5±3mm (9.39 inches)
	Total Height (with Terminal) 238.5±3mm (9.39 inches)
Approx Weight	Approx 43.6 kg (96.1lbs)
Terminal	T11
Container Material	ABS
Rated Capacity	154.6 AH/7.73A (20hr, 1.80V/cell, 25°C/77°F)
	150.0 AH/15.0A (10hr, 1.80V/cell, 25°C/77°F)
	127.5 AH/25.5A (5hr, 1.75V/cell, 25°C/77°F)
	110.7 AH/36.9A (3hr, 1.75V/cell, 25°C/77°F)
	89.6 AH/89.6A (1hr, 1.60V/cell, 25°C/77°F)
Max. Discharge Current	1500A (5s)
Internal Resistance	Approx 3.7mΩ
Operating Temp. Range	Discharge : -15~50°C (5~122°F)
	Charge : 0~40°C (32~104°F)
	Storage : -15~40°C (5~104°F)
Nominal Operating Temp. Range	25±3°C (77±5°F)
Cycle Use	Initial Charging Current less than 45.0A. Voltage 14.4V~15.0V at 25°C(77°F)Temp. Coefficient -30mV/°C
	No limit on Initial Charging Current Voltage 13.5V~13.8V at 25°C(77°F)Temp. Coefficient -20mV/°C
Capacity affected by Temperature	40°C (104°F) 103%
	25°C (77°F) 100%
	0°C (32°F) 86%
Self Discharge	Leoch LPGS series batteries may be stored for up to 9 months at 25°C(77°F) and then a freshening charge is required. For higher temperatures the time interval will be shorter.

### Applications

- ◆ All purpose
- ◆ Uninterruptable Power Supply (UPS)
- ◆ Electric Power System (EPS)
- ◆ Emergency backup power supply
- ◆ Emergency light
- ◆ Railway signal
- ◆ Aircraft signal
- ◆ Alarm and security system
- ◆ Electronic apparatus and equipment
- ◆ Communication power supply
- ◆ DC power supply
- ◆ Auto control system

### Constant Current Discharge (Amperes) at 25 °C (77°F)

F.V/Time	5min	10min	15min	20min	30min	45min	1h	2h	3h	4h	5h	6h	8h	10h	20h
1.85V/cell	241.8	190.1	161.7	135.2	106.9	81.2	67.2	42.7	33.2	27.3	23.2	20.2	16.43	13.92	7.50
1.80V/cell	319.9	239.4	192.5	157.5	123.0	92.1	74.7	46.4	35.6	29.0	24.9	21.7	17.51	15.00	7.73
1.75V/cell	368.1	268.5	214.6	173.0	131.1	97.4	79.0	48.6	36.9	30.0	25.5	22.3	17.81	15.15	7.80
1.70V/cell	410.1	296.1	231.8	183.9	138.3	102.3	82.5	51.0	38.2	30.9	26.2	22.7	18.06	15.23	7.95
1.65V/cell	447.9	316.4	244.1	193.5	144.8	105.4	85.4	52.4	39.6	31.8	26.8	23.2	18.34	15.38	8.03
1.60V/cell	498.0	346.3	263.2	207.8	153.9	111.4	89.6	54.3	41.0	32.6	27.3	23.7	18.56	15.63	8.10

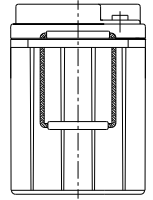
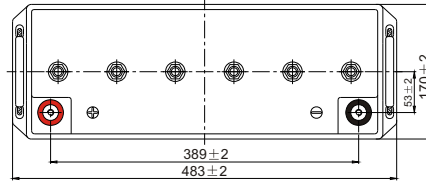
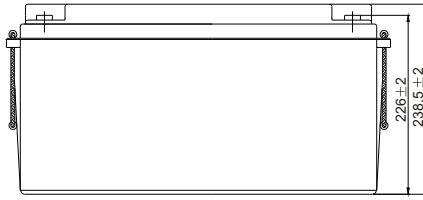
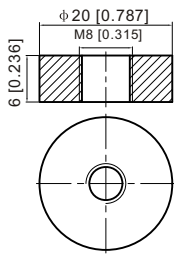
### Constant Power Discharge (Watts/cell) at 25 °C (77°F)

F.V/Time	5min	10min	15min	20min	30min	45min	1h	2h	3h	4h	5h	6h	8h	10h	20h
1.85V/cell	445.6	353.9	304.0	256.9	204.8	156.7	130.1	83.2	64.8	53.5	45.6	39.8	32.6	27.7	14.91
1.80V/cell	583.6	440.7	357.4	295.1	232.8	176.5	144.0	89.9	69.3	56.7	48.8	42.6	34.6	29.7	15.34
1.75V/cell	656.7	486.0	393.2	320.6	246.0	185.1	151.6	93.9	71.6	58.4	49.8	43.6	35.1	30.0	15.47
1.70V/cell	710.2	522.9	418.2	337.8	257.6	193.3	157.6	98.2	73.9	60.0	51.0	44.5	35.6	30.1	15.75
1.65V/cell	763.1	552.7	436.1	352.1	267.3	197.5	162.1	100.3	76.3	61.6	52.0	45.3	36.0	30.4	15.89
1.60V/cell	828.9	591.1	462.4	373.9	281.7	207.5	169.0	103.5	78.6	62.8	52.9	46.1	36.4	30.8	16.01

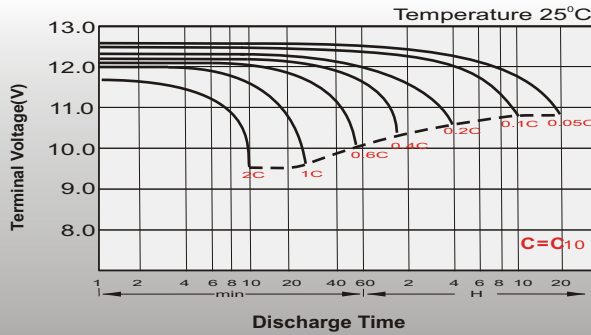
# Dimensions

## T11 Terminal

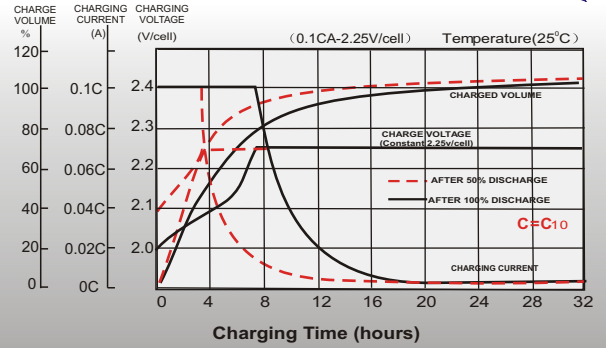
Unit: mm [inches]



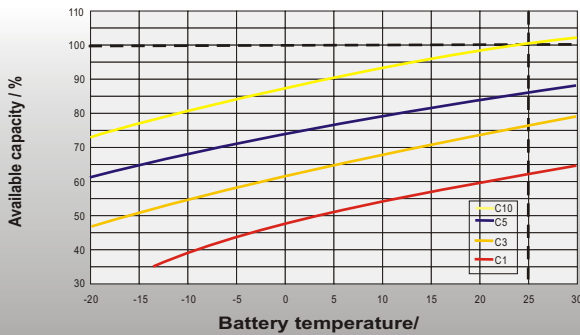
## Discharge Characteristics



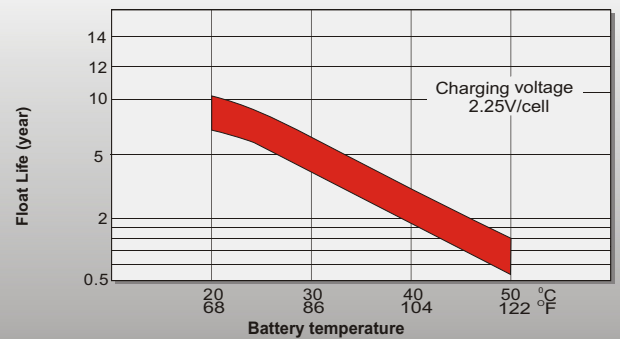
## Float Charging Characteristics



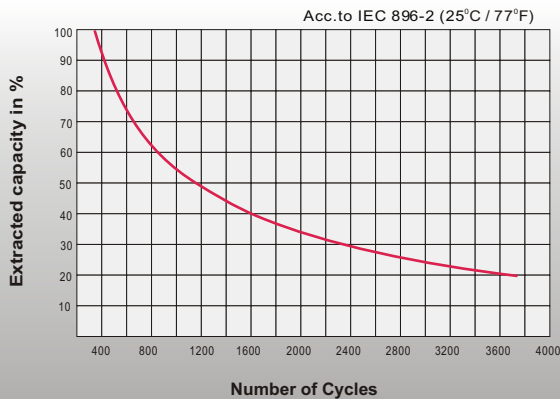
## Temperature Effects in Relation to Battery Capacity



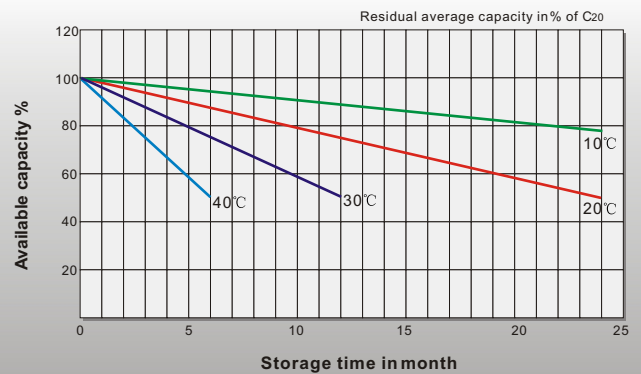
## Effect of Temperature on Long Term Float Life



## Cycle Life in Relation to Depth of Discharge



## General Relation of Capacity VS. Storage Time



## Sales Office

### China sales office:

Add: 5th Floor, Xinbaohui Bldg., Nanhai Blvd.,  
Nanshan, Shenzhen, China. 518052  
Tel: +86-755-86036060 (100 lines)  
Fax: +86-755-26067269  
E-mail: export@leoch.com  
Http://www.leoch.com

### HongKong sales office:

Add: Workshop C, 33/F, TML Tower,  
No. 3 Hoi Shing Road, Tsuen Wan,  
New Territories, Hong Kong  
Tel: +852 35786666  
Fax: +852 21170016  
E-mail: sales.hk@leoch.com

### Singapore sales office:

Add: No. 1 Tech Park Crescent,  
Singapore 638131  
Tel: +65 68416629  
Fax: +65 68443210  
Email: sales.sg@leoch.com

### North America sales office:

Add: 19751 Descartes, Unit A,  
Foothill Ranch, CA 92610, USA  
Tel: 949-588-5853  
Fax: 949-588-5966  
E-mail: sales@leoch.us  
Http://www.leoch.com

### Europe sales office:

Add: 9B Wheatstone Court, Waterwells  
Business Park, Gloucester, GL2-2AQ,  
UK United Kingdom  
Tel: +44(0) 1452 729428 / 1452 729696  
Fax: +44 (0)1452-690125  
E-mail: Sales.Europe@leoch.com